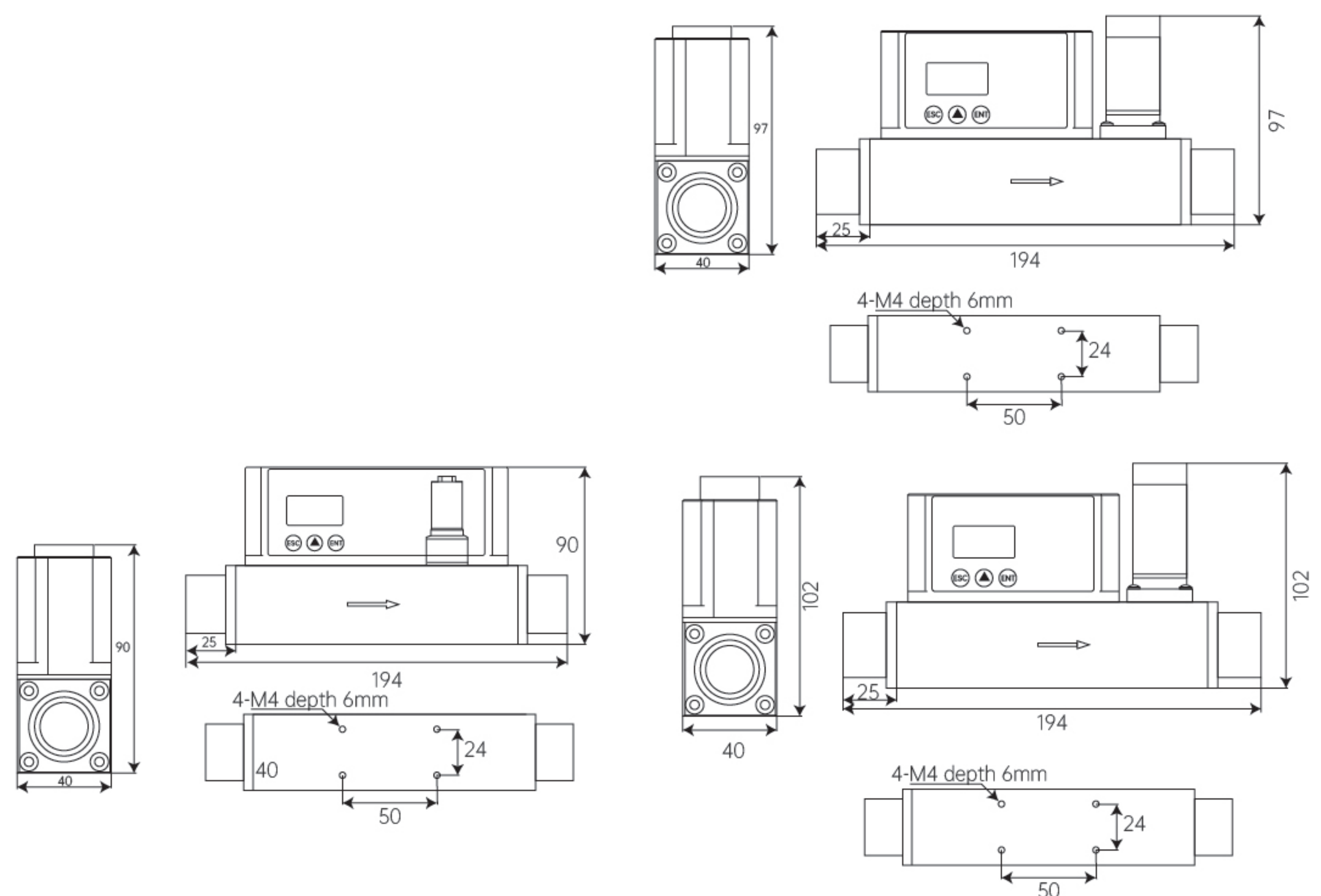
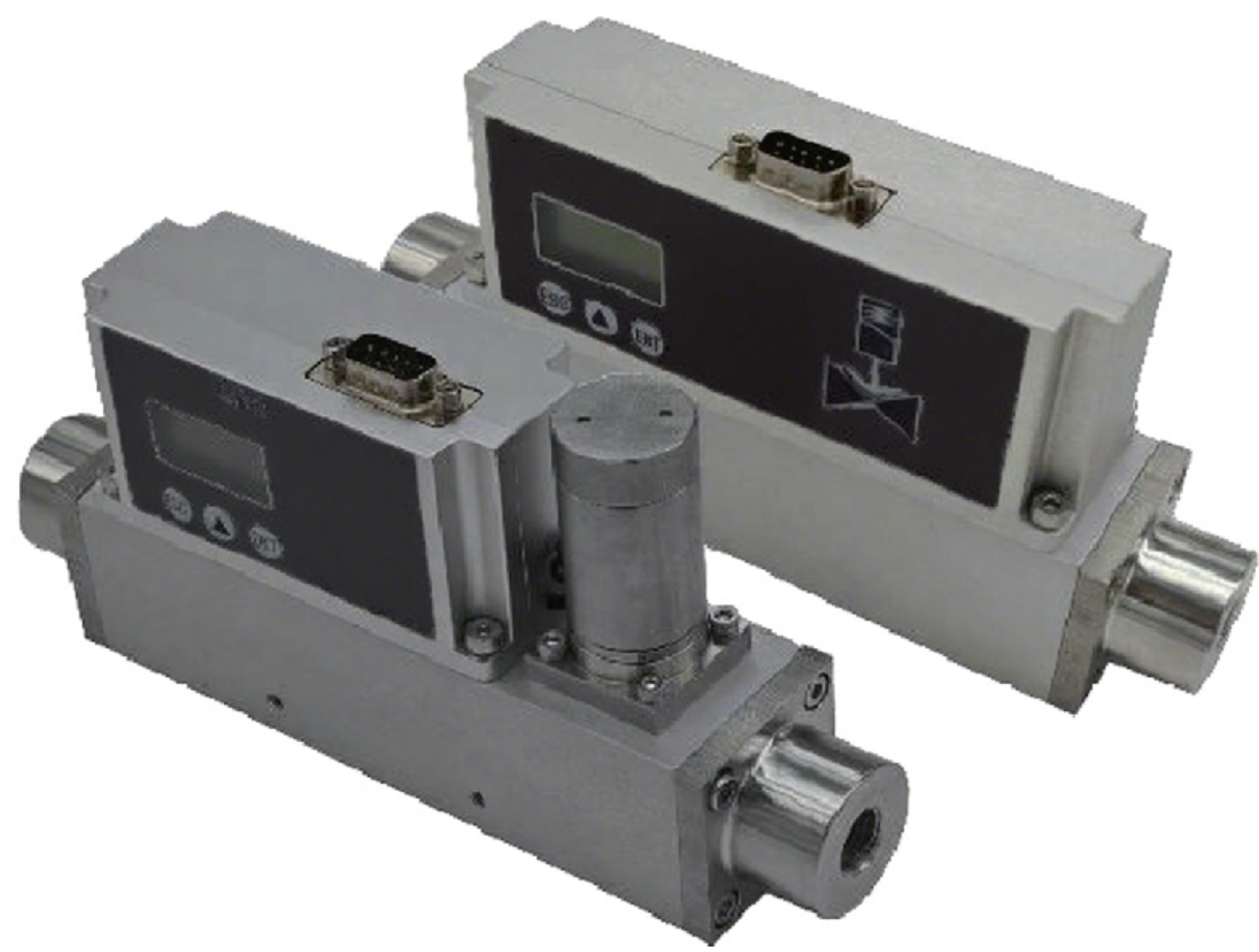


The Series KF151 Thermal Gas Mass Flow Controller

Control range from 1-100 SCCM to 3-300 SLPM



The Series KF151 Thermal Gas Mass Flow Controller is based on the principle of thermal conductivity. Through built-in heating elements and temperature sensors, it detects the rate at which heat is carried away by flowing gas. Using constant temperature difference or thermal diffusion technology, it converts flow signals into electrical signals for precise control. It can directly measure mass flow without requiring temperature and pressure compensation. Its applications are extensive: in semiconductor manufacturing, it precisely controls process gas flow to ensure chip fabrication accuracy; in the chemical industry, it manages reactor feed to enhance production stability; additionally, it is suitable for medical equipment gas rationing, environmental monitoring gas analysis, and laboratory gas flow regulation. This device serves as a critical measurement and control instrument in industrial automation and scientific research fields.

FEATURES

- Utilizes MEMS sensors with fast response time
- Stable zero point, high accuracy, and excellent repeatability
- Wide turndown ratio with selectable flow ranges
- Selectable display orientation (0°, 90°, 180°, 270°)
- Multiple signal output options available
- Optional standard threads

APPLICATIONS

- Semiconductor industry
- Chemical industry
- Pharmaceutical industry
- Food and beverage industry
- Electronics industry
- Environmental protection industry
- Energy industry
- Scientific research field

SPECIFICATIONS	
Accuracy	±(1.5+0.2FS)%
Power Supply	24V DC/200mA
Response Time	1s - 5s
Output	4-20mA or RS485
Zero Drift	±20mV
Display	Instantaneous flow, cumulative flow
Temperature Rating	-10°C to 55°C
Humidity Limit	Humidity: <95%RH, non-condensing
Storage Temperature	-10°C to 65°C
Communication	RS485 (Modbus RTU)
Pressure Rating	≤1.0MPa
Calibration Medium	Air 20°C, 101.325kPa

MODEL CHART								
Example	KF151	-F0	-S0	-GN0	-P0	-N0	-AIR	
Series	KF151							Thermal Gas Mass Flow Controller
Body Material		F0						Anodized aluminum
		F1						304 stainless steel
		F2						316 stainless steel
Flow Range			S0					1 SCCM~ 100 SCCM
			S1					5 SCCM~ 500 SCCM
			S2					10 SCCM~ 1000 SCCM
			S3					0.1 SLPM~ 10 SLPM
			S4					0.3 SLPM~ 30 SLPM
			S5					0.5 SLPM~ 50 SLPM
			S6					1 SLPM~ 100 SLPM
			S7					2 SLPM~ 200 SLPM
Process Connection				GN0				BSP 1/4" female thread
				PT2				PT 1/2" female thread
				NT				Special-made thread
Input					P0			4-20mA(default)
					P1			1-5V
					P2			RS485
Output						N0		4-20mA + RS485 (Default)
						N1		4-20mA + 1-5V
						N2		4-20mA + Pulse + RS485
Medium Type							AIR	Air (default)
							N2	Nitrogen
							O2	Oxygen
							CO2	Carbon dioxide
Note	All flow measurement ranges are data based on air.							MG Other mixed gases